



Year 2
The Neolithic Age

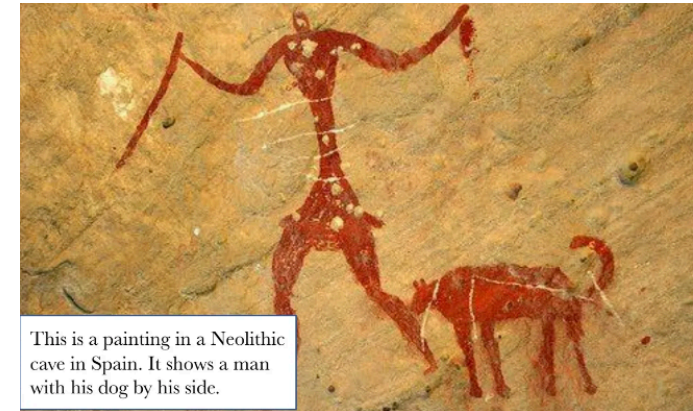
Key vocabulary

Dorothy Garrod	A historian that studied the Stone Age
Sickle	A tool used by farmers to cut grass
Natufians	The name of people who farmed in ancient Israel
Neolithic Age	“New Stone Age” when people learnt to grow their own food
Tending	Looking after animals and keeping safe
To farm	To grow crops or keep animals
plough	A sharp tool used to dig soil
Domesticated	Animals kept under control and looked after by humans.
Long barrows	Underground tunnels where bodies were buried
Wattle and daub	A mixture of clay, mud and manure used to make walls on early houses
Weave	Process of twisting plant fibres together to make cloth
Pots	Places to store grain made of clay

How a Neolithic settlement may have looked



Cave paintings show Neolithic people domesticated dogs

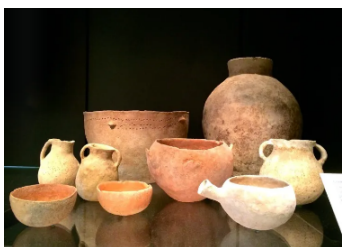


This is a painting in a Neolithic cave in Spain. It shows a man with his dog by his side.

Neolithic people ploughed fields to farm vegetables



Pots like this could be over 5000 years old



Wattle and daub was a mixture of clay, mud and manure



There are hundreds of long barrows in England

